

CERTIFICATE OF LOCATION OF GOVERNMENT CORNER

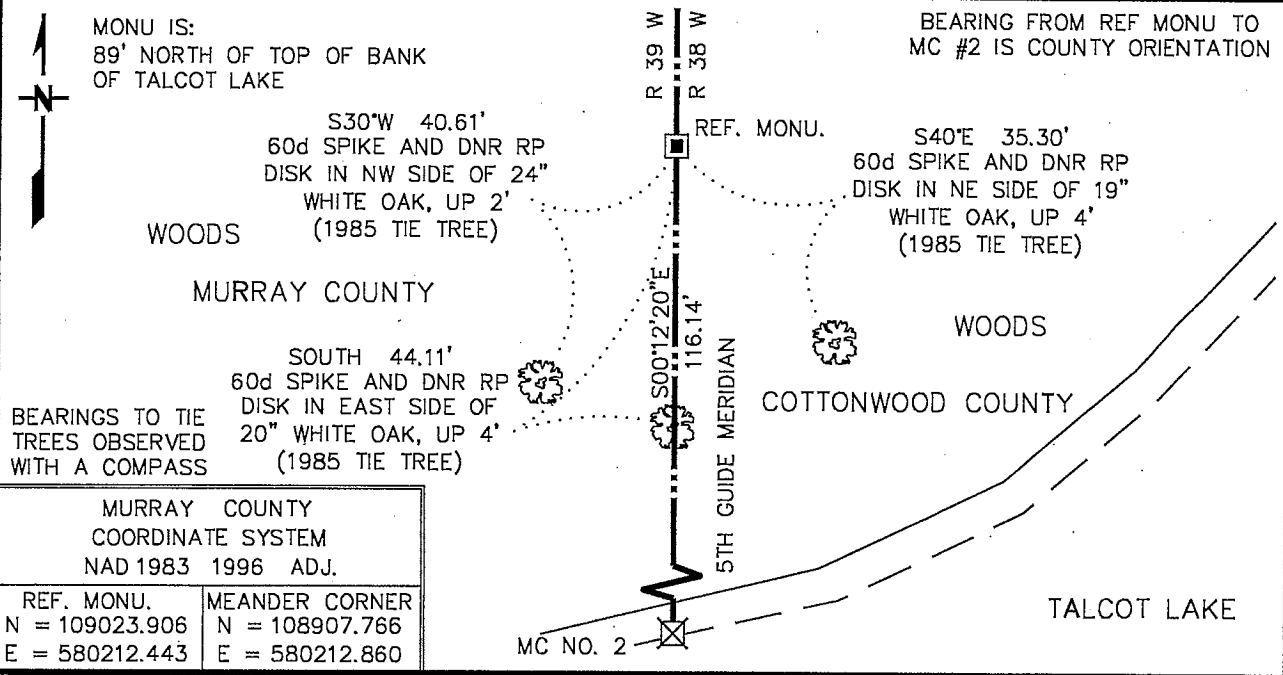
NUMBER 2 MEANDER Corner of Section 25, Township 105 N, Range 39 W

5TH Principal Meridian, State of Minnesota, County of MURRAY

At the corner location shown on the sketch:

On 6/28/16 found a 1 1/4" X 1 1/4" PERFORATED STEEL TUBE WITH ALUMINUM
DATE CAP STAMPED "DNR SURVEY MARKER", UP 0.5', REF. MONU.
 left monument as found, lowered monument, removed monument (explain)

On _____ Placed a _____
DATE



MURRAY COUNTY COORDINATE SYSTEM NAD 1983 1996 ADJ.	
REF. MONU. N = 109023.906 E = 580212.443	MEANDER CORNER N = 108907.766 E = 580212.860

Statement of evidence for this corner location is on back of this page. OCTOBER 2016
WMA09007

I hereby certify that this plan, specification, or report was prepared by me or under my direct supervision and that I am a duly Licensed Land Surveyor under the laws of the State of Minnesota.

SIGNATURE Bruce W. Shepherd DATE 12/6/16 License Number 17003
BRUCE W. SHEPPERD

The DNR Division of Lands and Minerals contacted the following for survey information:

Website - mngeo.state.mn.us for GLO plat and field notes

Website - murray-countymn.com for section and quarter section corner information

Cottonwood County Recorder's Office

Zieske Land Surveying Inc. of Windom

The following is from a Certificate of Location of Government Corner, signed by Bruce W. Shepperd, LS 17003, on December 20, 1985, and on file - not recorded - in the Murray County Recorder's Office:

This corner was originally established by the U.S. General Land Office survey in 1857. The government notes show corner marked with a wood post and a trench with the following bearing tree marked:

16" Bur Oak, South 78° West, 150 links (99.00 feet)

The notes also show corner 26.50 chains (1749.00 feet) South of the northeast corner of Section 25.

The government meander notes of lake in Section 19 and 30 of Township 105 North, Range 38 West show:

Could not find any of the meander corner posts noted on plats of township lines- they were either covered with water or washed out of places.

In April 1983, the DNR Bureau of Engineering contacted the following for corner information:

Cottonwood County Offices of the Recorder and Highway Engineer

Murray County Offices of the Recorder and Highway Engineer

Sioux Engineering of Windom

Martin Land Surveying of Worthington

The following information was obtained from the Cottonwood County Recorder's Office:

Plat 49 contains a resurvey of Township 105 North, Range 38 West done by C.W. Gove, County Surveyor, in 1898. Plat shows that corner was established 1749 feet south of the northeast corner of Section 25. A 2 ½" by 1 ½" by 30" cast iron stake was set to mark this location.

The following information was obtained from the Office of Sioux Engineering:

A copy of a resurvey plat of Township 105 North, Range 38 West, obtained from Howard Boeck of Westbrook and done by C.W. Gove, County Surveyor, in 1898, shows corner but does not indicate what was found or set. Corner is shown 1749 feet south of the northeast corner of Section 25.

The following information was obtained from the Cottonwood County Recorder's Office:

A resurvey plat of Township 105 North, Range 38 West, done by C.W. Gove, County Surveyor, in 1898, shows corner but does not indicate what was found or set. Corner is shown 1749 feet south of the northeast corner of Section 25.

In May 1983, the DNR Bureau of Engineering traversed to the area of the corner and found its location to be in Talcot Lake. Then the lost position for corner was computed using the northeast corner of Section 36 and the east quarter corner of Section 24. Searched for but found no evidence of the GLO bearing tree.

Accept the lost position as the location of the corner.

Traverse information is available from the DNR Bureau of Engineering.

The sketch of reference ties shows the corner location in Talcot Lake so a 1¼" x 1¼" x 20" perforated steel tube with aluminum cap stamped "DNR Survey Marker", up 0.3 of a foot was set for a reference monument on the east line of Section 25. The reference monument is shown:

117.49 feet from meander corner Number 2

93 feet north of the top of lake bank

DNR nail & disc on east side of 10" W. Oak, up 4 feet, S38°E, 35.02 feet

DNR nail & disc on east side of 14" W. Oak, up 4 feet, South, 44.30 feet

DNR nail & disc on west side of 16" W. Oak, up 2 feet, S30°W, 40.56 feet

2016 June 28, the DNR Division of Lands and Minerals found a 1¼" by 1¼" perforated steel tube with an aluminum cap stamped "DNR SURVEY MARKER", up 0.5 of a foot, being the reference monument to the corner. Then computed the lost position for the meander corner by using GLO proportional measurement from the northeast corner of Section 36 (southeast corner of Section 25) and the east quarter corner of Section 24.

The reference monument was found to be:

- a) on line between the southeast corner of Section 25 and the east quarter corner of Section 24
- b) 116.14 feet from the computed position for the meander corner

The 3 tie trees that were used in 1985 are still in place, but did not chop into them to find the nails and discs in fear of causing oak wilt.

Meander Corner Number 2 of Section 25, Township 105 North, Range 39 West
Page 3 of 3

Analysis of the above information led the DNR Division of Lands and Minerals to conclude that the computed position for the meander corner per GLO proportional measurement from the southeast corner of Section 25 to the east quarter corner of Section 24 is the lost position for the corner and the found 1¼" by 1¼" perforated steel tube with an aluminum cap stamped "DNR SURVEY MARKER" is a reference monument to the meander corner.